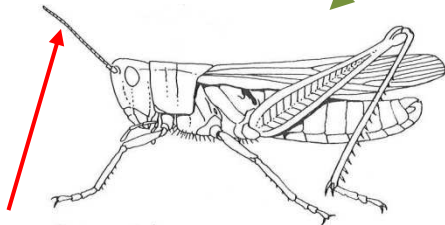
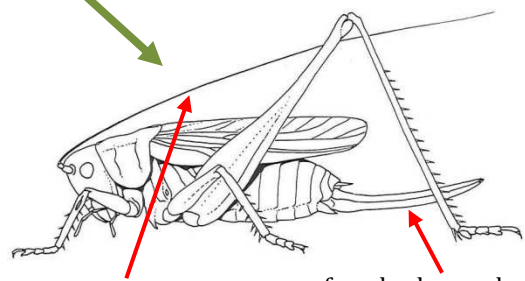


Common Bush-crickets

Grasshopper or Bush-cricket?



short antennae
(shorter than body)
→ see reverse of this sheet

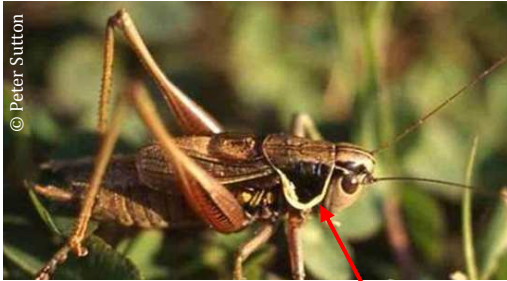


long antennae
(longer than body)

females have a long egg-laying organ (ovipositor)

© Denys Ovenden

Roesel's bush-cricket *Metrioptera roeselii*



- long grass
- roadsides
- field margins

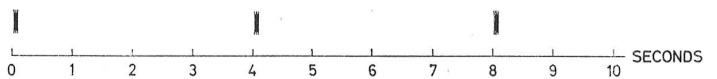
- cream-coloured crescent on shoulder
- brown colour
- usually short wings
- 2-3cm
- song: a loud, continuous, high buzz like overhead power cables; heard well through a bat detector set to c. 20kHz

Dark bush-cricket *Pholidoptera griseoaptera*



- hedges
- brambles
- woodland

- dark brown and black
- very short or no wings
- 2-3cm
- song: short chirps at intervals; set bat detector to c. 22kHz:

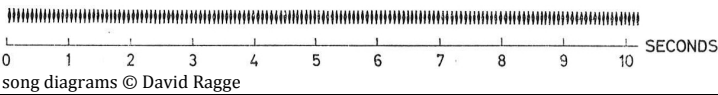


Long-winged conehead *Conocephalus discolor*



- long grass
- reeds

- green body
- long brown wings
- 2-3cm
- song: a faint continuous "chuffing", best heard with a bat detector set to about 30kHz:



Speckled bush-cricket *Leptophyes punctatissima*



- hedges
- woodland
- gardens

- very short wings
- 1-2.5cm
- female has broad, upcurved ovipositor
- song: very faint ticks every 3-5 seconds; with a bat detector set to 40kHz these are heard as very loud clicks

Oak bush-cricket *Meconema thalassinum*



- gardens
- hedges
- woodland

- long wings
- pale green colour
- 1.5-2cm
- nocturnal and attracted to light, sometimes found indoors
- the related Southern Oak bush-cricket has short wings

Great Green bush-cricket *Tettigonia viridissima*



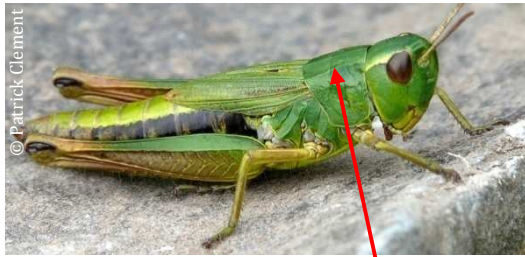
- scrub
- hedges

- green with brown stripe on top
- wings longer than body
- very large: 4-6 cm
- song continuous, harsh, loud; late afternoon & into night:



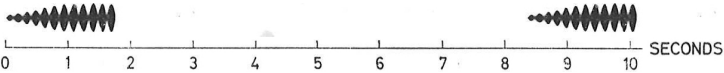
Common Grasshoppers & Groundhoppers

Meadow Grasshopper *Chorthippus parallelus*



- all kinds of rough grass
- 1-2cm
- often green

- female usually short-winged
- lines on shoulders almost straight
- song: scratchy bursts of chirps; set bat detector to c. 10kHz:

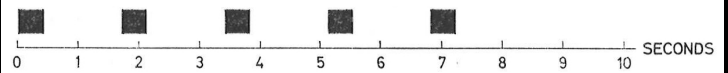


Field Grasshopper *Chorthippus brunneus*

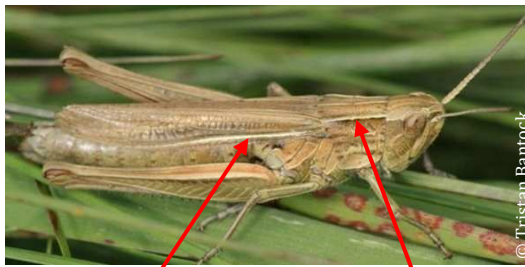


- short, dry patchy grass

- lines on shoulders strongly indented
- hairy underside
- song: a series of short soft buzzes; set detector to c. 10kHz
- rear end of shoulder shield has got pale patches
- 1.5-2.5cm

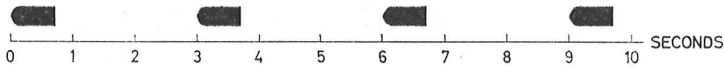


Lesser Marsh Grasshopper *Chorthippus albomarginatus*

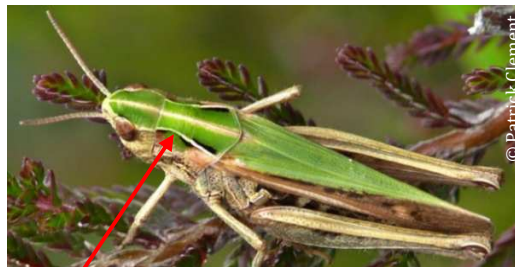


- damp grass
- increasingly in drier areas

- usually white line on wing
- often light brown
- song: a series of longer, soft chirps, about 3s apart; c.10kHz
- straight lines on shoulders
- 1.5-2.5cm
- long wings

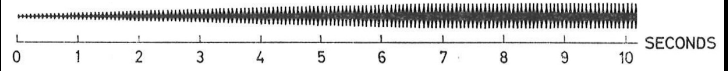


Common Green Grasshopper *Omocestus viridulus*



- damp grass
- meadows & hillsides

- lines on shoulders incurved, marked white or cream
- song a fast ticking of increasing volume, 10+s long; 10kHz
- 1.5-2.5cm
- long wings

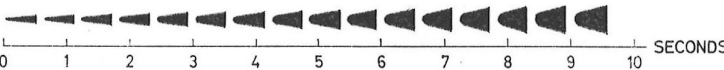


Mottled Grasshopper *Myrmeleotettix maculatus*

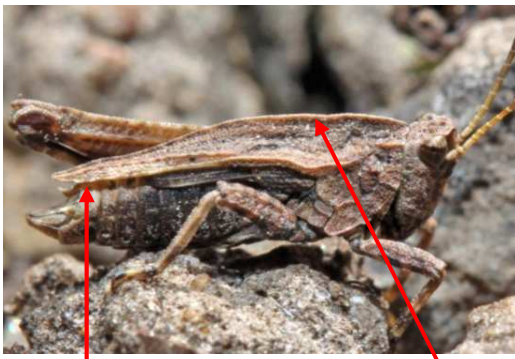


- bare ground, dry, open grass
- heathlands, dunes, quarries

- clubbed antennae, not white-tipped
- song: a crescendo of buzzy chirps, c.10kHz
- 1-2cm
- rounded head



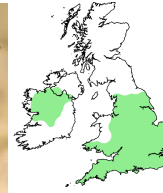
Common Groundhopper *Tetrix undulata*



- damp or dry bare ground with mosses and lichens

- shoulder shield as long as body
- keel on shoulder shield very prominent
- 1cm
- does not sing

Slender Groundhopper *Tetrix subulata*

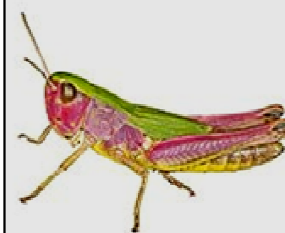


- damp, bare ground with mud or very short vegetation

- shoulder shield much longer than body
- keel on shoulder shield low, not prominent
- 1cm
- does not sing

Further reading:

A Photographic Guide to the
Grasshoppers & Crickets
of Britain & Ireland



Martin Evans
Roger Edmondson

www.wildguideuk.com

Record your observations online at:

www.orthoptera.org.uk

or

www.brc.ac.uk/irecord

Attach a photo to receive verification

 **Grasshoppers & Related Insects Recording Scheme**

 **BRC** Biological Records Centre